

Oversize Load Carrying Vehicles

September 2000

i
information
bulletin



Victoria is facilitating the efficient movement of oversize and overmass vehicles carrying indivisible loads.

This information bulletin summarises the operating conditions for oversize and overmass vehicles carrying large indivisible items and unladen vehicles that are specially designed to transport these items.

The operating conditions enable these large vehicles to move around Victoria in an efficient manner, without the need to obtain a VicRoads' permit. The construction, earthmoving, mining, logging and primary production industries particularly benefit from this initiative.

The specified warning devices, operating conditions and travel time restrictions provide safe conditions for the movement of these larger trucks.

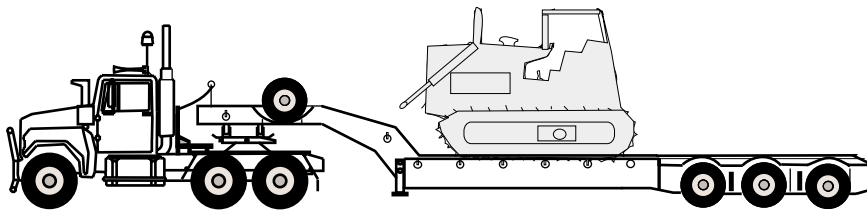
What Vehicles are Covered?

This information bulletin applies to the following **Class 1** load carrying vehicles:

- a vehicle that, in carrying a large indivisible item, exceeds one or more of the general mass and dimension limits in Part 4 of the Road Safety (Vehicles) Regulations 1999; or
- an unladen low loader or house float that is specially designed to carry a large indivisible item.

It does not apply to:

- a vehicle carrying a loaded or empty container; or
- Class 2 vehicles such as B-doubles and road trains; or
- Class 3 vehicles such as oversize hay carrying vehicles.



Dimension Limits

The following dimension limits must not be exceeded:

Table 1 - Dimension Limits for Class 1 Load Carrying Vehicles

Type of Vehicle or Combination	Dimension	Limit
Any vehicle	Width	3.5 m
	Height	4.6 m
Rigid vehicle	Length	12.5 m
Prime mover and semi-trailer, extendable semi-trailer or low loader/dolly combination	Length	25.0 m
	Rear overhang (the distance from the centre of the rear axle group to the rear of the vehicle (or load))	Lesser of 5.5 m or 25% of the overall length of the laden combination

Note: Any flags, lights or mirrors are disregarded when measuring the width of a vehicle.

Axle Mass Limits

Axle mass limits for low loaders are shown in Table 2.

Table 2 - Axle Mass Limits for Class 1 Low Loaders

Single Axle or Axle Group	No. of Tyres	Mass Limit (tonnes)
Steer axle	2	6.0
Tandem axle group	8	18.5
Tandem axle group on a trailer	16	21.0
Tri-axle group	12 or more	25.0
Oversize tri-axle group	12 or more	27.0
Quad axle group	16 or more	27.0

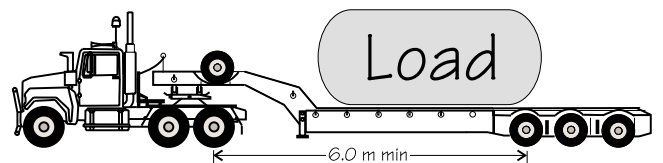
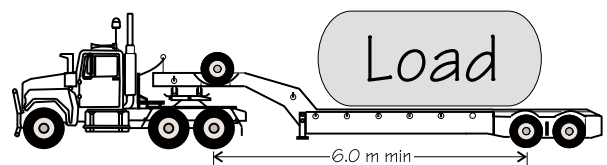
Notes:

- The above mass limits only apply to axle groups with at least 1.2 m spacings between axles.
- An oversize tri-axle group is a tri-axle group where the distance between the first and third axles is 3.6 m.
- The axle manufacturer's mass limit and the tyre manufacturer's mass limits must not be exceeded.

Gross Mass Limits

The gross mass limit is the **lesser of:**

- a. the vehicle manufacturer's gross combination mass;
- b. the sum of the tyre manufacturer's mass limits for all the tyres in the combination;
- c. the sum of the axle manufacturer's mass limits for all the axles in the combination;
- d. the sum of the axle mass limits from Table 2 for all axles/axle groups in the combination; and
- e. **49.5 tonnes** minus 1.0 tonnes for every 0.3 metres by which the distance between the centreline of the rearmost axle of the prime mover and the centreline of the foremost axle of the trailer's rear axle group is less than 6.0 m (see accompanying diagrams).



What Safety Precautions must I take?

Daytime Travel

Table 3 - Warning Devices for Daytime Travel

Warning Device	More than 2.5 m wide, but not more than 3.0 m wide	More than 3.0 m wide	More than 19.0 m long, but not more than 22.0 m long	More than 22.0 m long
Low Beam Headlights on	Yes	Yes	Yes	Yes
Warning Light operating	No	Yes	No	No
Oversize Sign	Yes (front & rear)	Yes (front & rear)	No	Yes (rear only)
Flags	Yes	Yes	No	No

Notes:

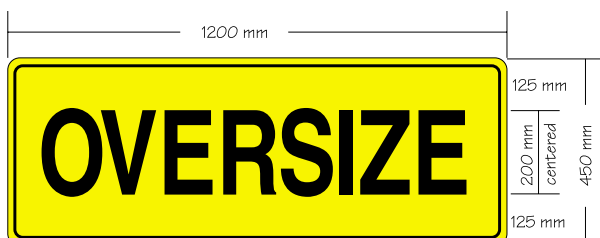
○ **Warning lights**

Warning lights must emit a rotating, flashing, yellow coloured light. They must flash between 120 and 200 times a minute, and have a power of at least 55 watts.

A warning light must be clearly visible at a distance of 500 m in all directions. If one warning light is not clearly visible from all directions, an additional warning light must be used (usually at the rear of the vehicle) to ensure that at least one of the lights is always clearly visible from a distance of 500 m.

The warning sign must:

- (a) have the word **OVERSIZE** in black letters on a Class 1 or Class 2 yellow retro-reflective background; and
- (b) have the manufacturer's name or trademark, and the brand and class of retroreflective material permanently marked in block letters at least 3 mm but not more than 10 mm high; and
- (c) have a black border at least 20 mm wide; and
- (d) be made of flat, weatherproof material; and
- (e) be mounted vertically, with its bottom edge above the bumper bar or at least 500 mm above the ground if there is no bumper bar; and
- (f) comply with the minimum dimensions shown in the diagram below.



The warning sign may be in two parts, in which case:

- (a) the word **OVER** must be on the left part and the word **SIZE** on the right part; and
- (b) both parts must be mounted at the same height.

○ **Flags**

4 brightly coloured red, or yellow, or red and yellow flags, each at least 450 mm long and 450 mm wide must be attached to the extremities of the vehicle or the extremities of the load where it projects beyond the vehicle.

Thin projecting loads

If a load projects more than 150 mm beyond the sides of the vehicle, and the projection is less than 500 mm thick, the following is required:

- (a) a warning light on the vehicle; and
- (b) at least two retro-reflective yellow rigid delineators 300 x 300 mm with one attached to the front and the other attached to the rear of the projection.



Plan your route to avoid low bridges

Night Travel

When travelling at night, in addition to the above safety precautions, the following warning devices are required:

- one or more warning lights, as specified above, must be displayed on all vehicles more than 2.5 m wide or more than 22.0 m long;
- side marker lights showing yellow to the front and red to the rear and positioned no more than 2.0 m apart, must be displayed on any load projecting out from the vehicle;
- front clearance lights, and rear clearance lights must be attached to any load projecting out from the vehicle.



Vehicle displaying required warning devices

Allowable Travel Times

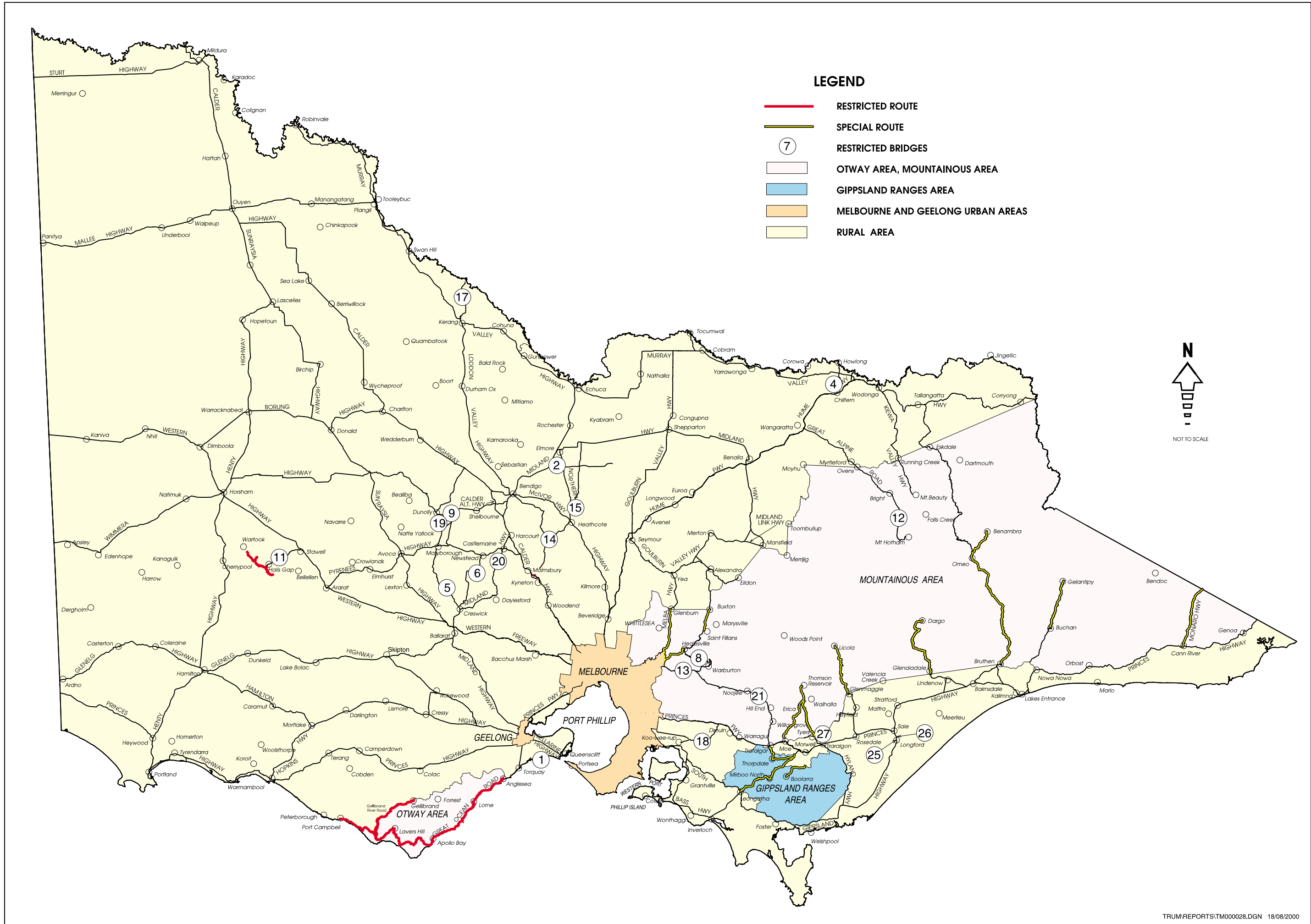
Oversize vehicles may only travel during the following times:

Table 4 - Travel Times

Location	Day	Up to 3.1 m wide and/or 19.0 m long	Up to 3.1 m wide and/or 19.1 m - 22.0 m long	3.2 m - 3.5 m wide and/or 22.1 - 25.0 m long
Wharf Roads, Hume, Princes and Western Freeways	Any day	At all times	At all times	At all times
Rural Areas	Any day	At all times	At all times	Sunrise - sunset
Princes Highway through Geelong Urban Area	Any day	At all times	At all times	9.00 am - 4.00 pm 6.30 pm - 7.00am
Melbourne and Geelong Urban Areas	Monday - Friday (not public holidays)	At all times	9.00 am - 4.00 pm 6.30 pm - 7.00 am	9.00 am - 4.00 pm 6.30 pm - sunset 11.00 pm - 6.00 am
	Saturday, Sunday and public holidays	At all times	11.00 pm - sunset	11.00 pm - sunset

Notes:

- Wharf roads are those south of Footscray Road servicing Swanson Dock and Appleton Dock, and Dockside Road and Williamstown Road west of Todd Road, both in the suburb of Port Melbourne.
- Hume Freeway includes the Hume Highway and Freeway between Somerton and Wodonga.
- Princes Freeway includes Princes Highway and Freeway between Officer and Traralgon and also between Laverton North and Corio.
- Western Freeway includes the Western Highway and Freeway between Deer Park and Ballarat.
- Melbourne and Geelong Urban Areas are shown on the attached maps.
- Rural Areas are shown on the attached maps.

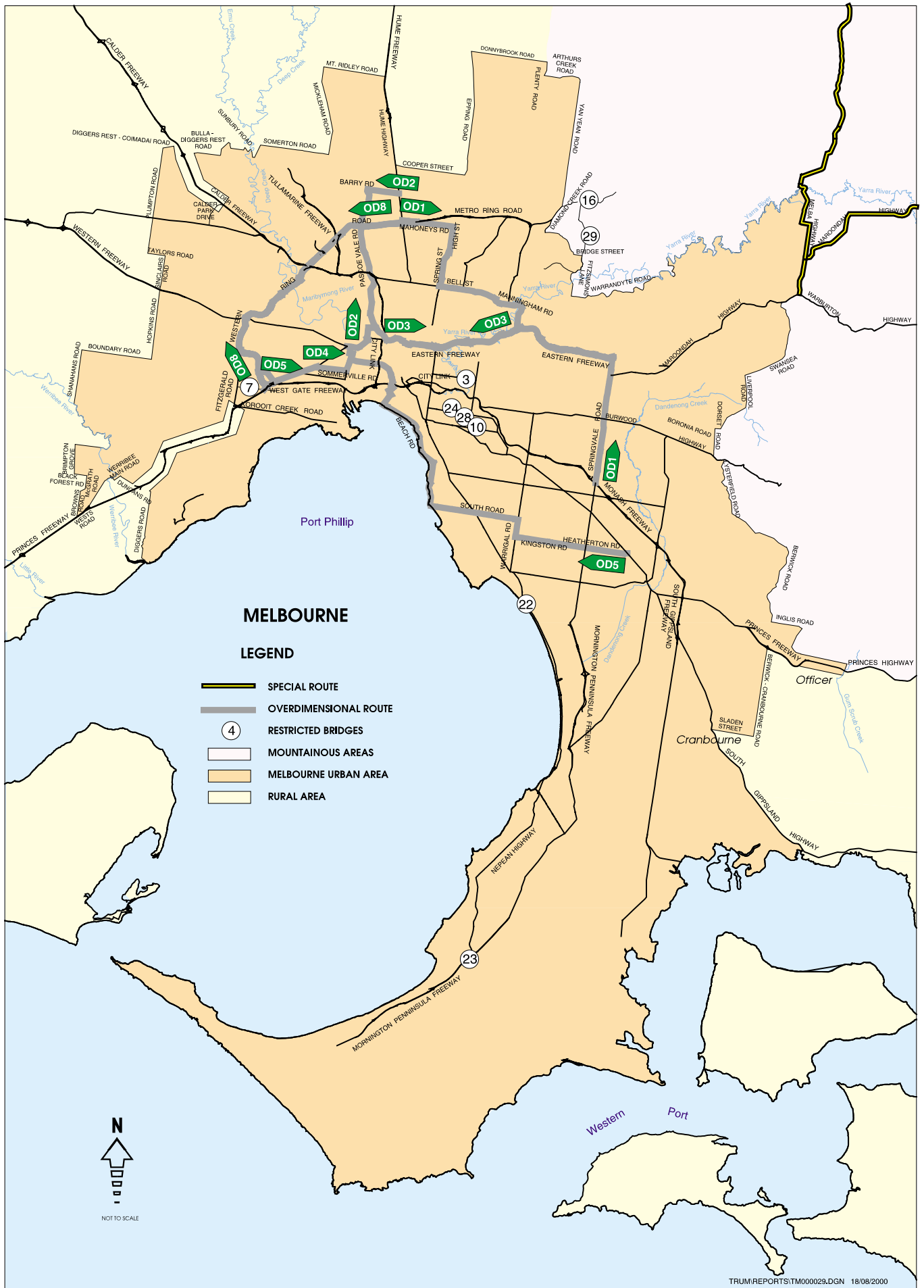


LEGEND

- RESTRICTED ROUTE
- SPECIAL ROUTE
- 7 RESTRICTED BRIDGES
- OTWAY AREA, MOUNTAINOUS AREA
- GIPPSLAND RANGES AREA
- MELBOURNE AND GEELONG URBAN AREAS
- RURAL AREA



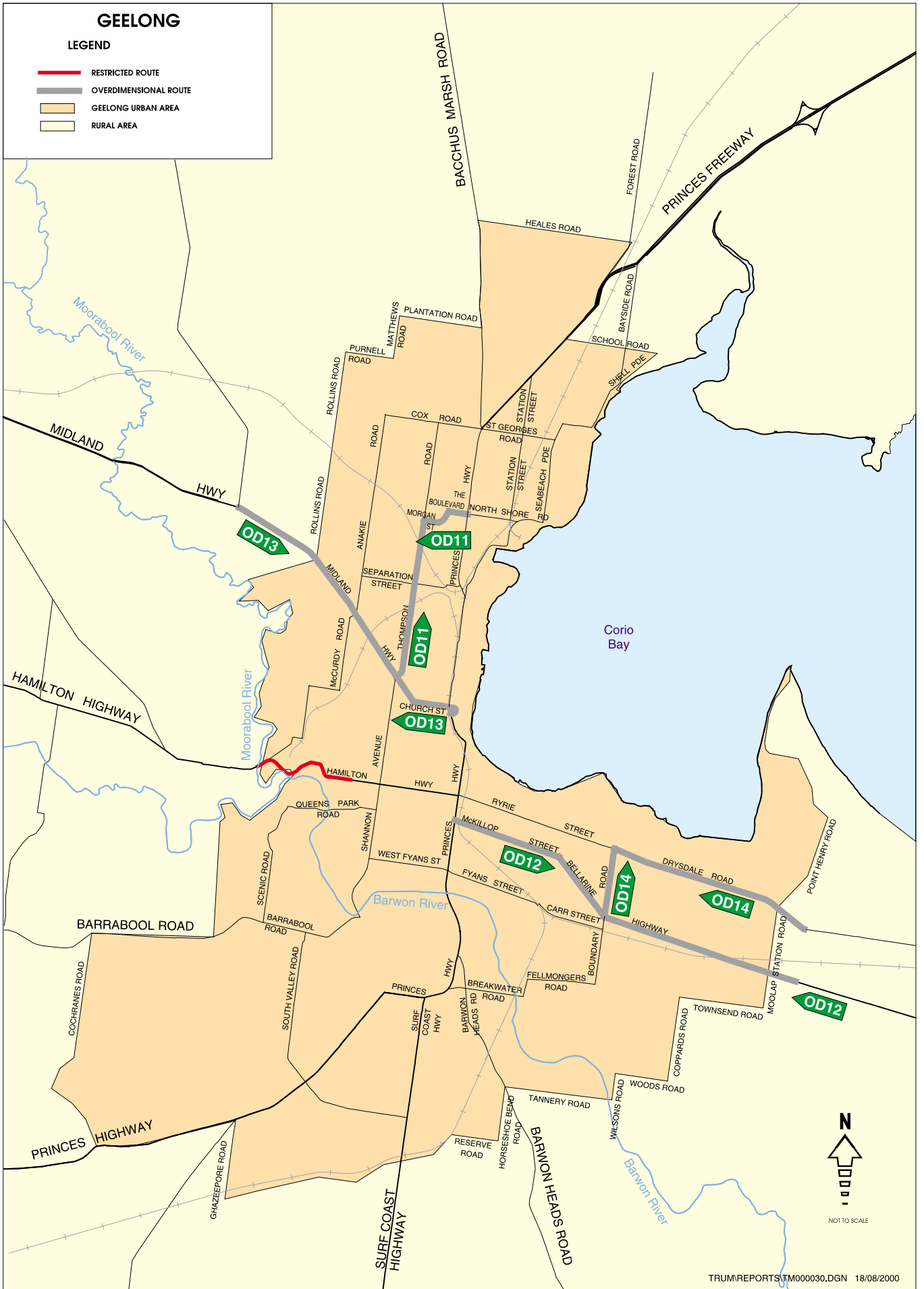
NOT TO SCALE



GEELONG

LEGEND

- RESTRICTED ROUTE
- OVERDIMENSIONAL ROUTE
- GEELONG URBAN AREA
- RURAL AREA



NOT TO SCALE

Travel Time Exemptions for Unladen Low Loaders and House Floats

To allow unladen low loaders with or without a dolly, and house floats to get to and from job sites, unladen low loaders and house floats up to 2.7m wide and 25m long have no travel time restrictions.

Where can I Drive?

Travel is permitted **on all roads** including the “yellow on black” special routes, referred to on the maps on the previous pages, **except for:**

- (a) roads in the “pink” Otway Area and Mountainous Area;
- (b) roads in the “blue” Gippsland Ranges Area;
- (c) on “red” restricted routes that are unsuitable for oversize vehicles;
- (d) over mass limited bridges shown and listed on the following pages;
- (e) beneath a bridge or overhead structure which carries the words LOW CLEARANCE or CLEARANCE if the height of the vehicle is equal to or greater than the clearance shown on the sign; or
- (f) beneath any other overhead structures, bridges, cables, wires or trees unless there is at least 200 mm clearance to the highest point of the vehicle.

Crossing Bridges

Where it is reasonable, overmass low loaders must avoid being on a bridge at the same time as a B-double, another overmass low loader or a mobile crane.

Travel over the West Gate Bridge

If a low loader exceeds the general mass limits in Part 4 of the Regulations and is to cross the West Gate Bridge:

- (a) the vehicle must travel in one of the two right hand lanes nearest the centre median; and
- (b) if it cannot maintain a speed of at least 65 km/h -
 - (i) two rotating yellow warning lights must be affixed to the rear of the permit vehicle; or
 - (ii) a pilot vehicle must travel at the rear of the permit vehicle within a distance of 50 m.

Travel in City of Melbourne

The registered operator must obtain permission from the City of Melbourne before the vehicle travels in that area of the City of Melbourne bounded by the eastern side of Spring Street, the northern side of Latrobe Street, the western side of Spencer Street and the southern side of Flinders Street.

Operating Conditions

No Travelling if Low Visibility

A low loader or house float must not travel if:

- a. visibility is less than 250 m in the daytime; or
- b. the headlights of a vehicle approaching within 250 m cannot be seen at night.

If a vehicle is already travelling when visibility is reduced to the level described above, the driver must drive it to the nearest safe parking area, and wait until visibility improves beyond that level before continuing to travel.

Minimum Following Distance

When following any other oversize vehicle, maintain a distance of 200 m from that vehicle, except:

- a. when overtaking the vehicle in front; or
- b. when the vehicle in front is stopping; or
- c. when there is a separate lane for overtaking; or
- d. in an urban area where it is impractical to maintain a distance of 200 m.

Allowing Vehicles to Overtake

If traffic is banking up behind you, due to your slower speed, where it is safe to do so, move to the left and if necessary stop to let following vehicles overtake.

Unladen Low Loaders and House Floats

An unladen low loader, dolly, jinker or house float with 4 tyres on each axle, must not be more than 2.5 m wide.

An unladen low loader, dolly, jinker or house float with 8 tyres on each axle, must not be more than 2.7 m wide.

Carrying a pilot vehicle, dolly and/or jinker is considered to be operating unladen.

Making Vehicles Smaller

Unladen vehicles must be reduced to the smallest practicable dimensions.

If a load can be safely loaded in more than one way, it must be loaded in a way that minimises the width of the vehicle and its load.

More than One Item

More than one indivisible item may be carried on the vehicle provided that:

- any additional item does not cause the overall dimensions of the laden vehicle to increase (as shown in photo opposite); and
- the vehicle's mass does not exceed the general mass limits in Part 4 of the Regulations, ie the vehicle combination must not exceed the axle and gross weights applicable to general freight vehicles.



Carrying more than one overwidth item within the general length, height and mass limits

Prohibited Bridges

Overmass low loaders, exceeding the general mass limits in Part 4 of the Road Safety (Vehicles) Regulations 1999, must not cross the following bridges:

Table 5 - Prohibited Bridges

Number	Road Name	Feature Crossed	Locations	Map Reference
1	Barwon Heads Rd	Barwon River	Barwon Heads	Mel 233F10
2	Bendigo-Murchison Rd	Campaspe River	East of Goornong	VSD 45B3
3	Burwood Rd	Hawthorn-Lilydale Rail	Hawthorn	Mel 45A10
4	Chiltern-Howlong Rd	Open Town Drain	Chiltern	VSD 35B4
5	Clunes-Creswick Rd	Creswick Creek	Clunes	VSD 58E6
6	Creswick-Newstead Rd	Green Gully Creek	Eberys	VSD 59B5
7	Dohertys Rd	Outfall Sewer	Laverton North	Mel 40A12
8	Don Rd	Myrtle Creek	North of Launching Place	VSD 80B5
9	Dunolly-Eddington Rd	Bet Bet Creek	Eddington	VSD 43F8
10	Glenferrie Rd	Gippsland Rail	Malvern	Mel 59B10
11	Grampians Rd	Fyans Creek - Dellys Bridge	Halls Gap	VSD 56A4
12	Great Alpine Rd (was Ovens Hwy)	Ovens River East Branch - (School Creek)	Harrietville	VSD 50C8
13	Healesville-Koo-Wee-Rup Rd	Yarra River	North of Yallock	Mel 286G8
14	Heathcote-Kyneton Rd	Campaspe River	Redesdale	VSD 60A2
15	Heathcote-Rochester Rd	Ladys Creek	North of Heathcote	VSD 45D6

Map Reference: VSD - VicRoads State Directory, Mel - Melway Street Directory

Continued

Table 5 - Prohibited Bridges (continued)

Number	Road Name	Feature Crossed	Locations	Map Reference
16	Heidelberg-Kinglake Rd	Diamond Creek	Diamond Creek	Mel 12A6
17	Kerang-Murrabit Rd	Barr Creek	North of Capels Crossing	VSD 20G3
18	Koo-Wee-Rup-Longwarry Rd	No 4 Yallock Drain	Bayles	VSD 96B4
19	Maryborough-Dunolly Rd	Bet Bet Creek	Bet Bet	VSD 43E8
20	Midland Hwy	Loddon River	Guildford	VSD 59D4
21	Mt Baw Baw Rd	Latrobe River	Noojee	VSD 81B8
22	Nepean Hwy	Mordialloc Creek	Mordialloc	Mel 92F1
23	Nepean Hwy	Brokil Creek	Dromana	Mel 151C10
24	Orrong Rd cnr Malvern Rd	Caulfield Rail	Toorak	Mel 2MG11
25	South Gippsland Hwy	Long Waterhole Creek	Longford	VSD 99C4
26	South Gippsland Hwy	Latrobe River	Longford	VSD 99C4
27	Tyers Rd	Latrobe River	Tyers	VSD 97J4
28	Wattletree Rd	Gippsland Rail	Malvern	Mel 59B9
29	Wattletree Rd	Diamond Creek	Eltham	Mel 22A2

Map Reference: VSD - VicRoads State Directory, Mel - Melway Street Directory

Your Responsibility

Given the diversity of road conditions, terrain, weather and operating hours, it is the responsibility of the registered operator and driver of the oversize or overmass vehicle to ensure road safety is maintained. The specified warning devices must be used when required.

Any trip hereby permitted is made at the absolute risk of the registered operator and driver of the vehicle. No representation is made by VicRoads that any road, bridge, culvert, causeway or grid is capable of withstanding the loads carried, or that there is sufficient clearance to any wires, structures, trees or rail level crossing.

Liability

Failure to comply with any of the conditions listed in this Information Bulletin will leave the registered operator and driver liable for prosecution.

It is an offence to display a warning sign or operate a warning light when it is not required.

What do I do if I cannot Comply?

If your vehicle exceeds the mass and dimension limits in this information sheet or you need to travel in areas or at times that are prohibited, contact VicRoads to ascertain whether a special permit would be granted.

Further Information

Schedule 1 of the Road Safety (Vehicles) Regulations 1999 provides greater detail on these requirements.

For further information contact VicRoads' Permit Issuing Officers:

- in the metropolitan area on telephone (03) 9313 1224 or (03) 9881 8852; or
- in the rural area on telephone 131 171.

Send e-mail to:

oreganj@vrnotes.roads.vic.gov.au